



# Update on NATAL's Work During Operation Iron Swords



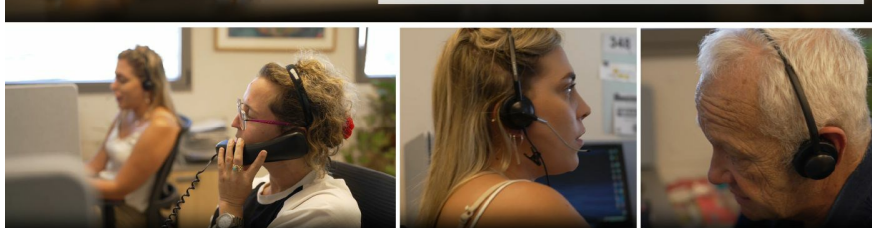
## The State of Israel is reeling from trauma

Since October 7th, we have been grappling with the most horrific terrorist attack in our history and fighting a war on multiple fronts. This national trauma will leave a lasting invisible scar on our collective psyche for years to come.

**NATAL remains steadfast in its mission of providing vital emotional support to help our citizens cope with trauma and anxiety, while strengthening and restoring our national resiliency.**



**NATAL's Helplines**  
**NATAL's Helplines have received over 16,000 calls to date** - more than half of our total annual calls. We are bolstering these lines to operate **around the clock**, offering assistance and emotional support to traumatized citizens, families of the injured, kidnapped, bereaved, survivors of the Nova Music Festival, and many others.



## Clinical Unit

**Our Clinical Unit has seen patient numbers triple since the war began.**

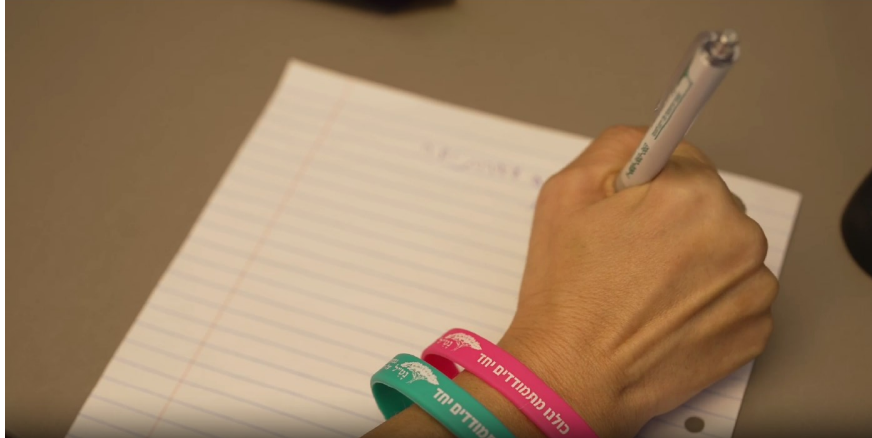
In addition to swiftly intaking new patients across Israel, we are providing therapy to many existing NATAL patients experiencing an escalation in their symptoms of post-trauma since October 7th. The earlier we can treat our increasing number of new patients, the better their chances of starting the path of healing and recovery.

**NATAL's mental health professionals are also on the ground, offering thousands of hours of treatment in hotels housing displaced Israelis.**



## Community Resiliency Unit

The Community Resiliency Unit has been supporting **hundreds of organizations** since October 7th - from rescue and health organizations to The Home Front Command, government offices, social organizations and NGOs, and businesses. To date, **we have conducted over 400 emergency interventions** to help these organizations process and manage trauma.



## Multidisciplinary Center for Trauma Studies

At NATAL's Multidisciplinary Trauma Studies Center, we are training hundreds of trauma therapists in Israel and globally and launching specialized trauma therapy courses led by top experts in the field.

For registration and more information: [www.natal-school.org.il](http://www.natal-school.org.il)

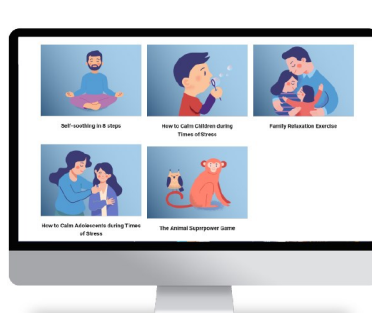


## Raising awareness: The key to erasing the stigma around mental health

NATAL encourages those who need support to seek help by actively engaging in public advocacy efforts, including webinars with the America-Israel Friendship League, Harvard Medical School and more.

We've also compiled emergency tools, materials, and information in various languages, available to the public.

[Visit Site](#)



As the conflict unfolds and changes, so do the mental health needs and challenges we face, whose full extent will only become clear over time. NATAL is fully committed to restoring the mental health of Israel's citizens, a vital part of rebuilding our society's resilience. While trauma can leave an 'invisible wound' that may last a lifetime, recovery is possible, and we at NATAL are dedicated to helping those affected find their way back.

We share in the sorrow of the bereaved families, pray for those injured to recover, and hope for the safe return of the hostages. Our heartfelt thanks go to all partners, donors, and NATAL members for supporting us in this critical national mission.

**Hoping for more peaceful days ahead.**

**WE NEED YOU NOW MORE THAN EVER!**

For donations click here

## Stand with Israel: AFN 2023 Gala - November 30, NYC

**STAND WITH ISRAEL. SUPPORT NATAL.**  
 583 Park Avenue | NYC  
 6:00 PM COCKTAIL RECEPTION | 7:00 PM DINNER & AWARDS PROGRAM

*Honoring*

**DR. ITAMAR BARNEA**  
 Chief Psychologist | NATAL

**OFER YARDENI**  
 Chairman & CEO | Stonehenge NYC




**2023 HUMANITARIAN AWARD & KEYNOTE SPEAKER**

**2023 IMPACT AWARD**

[Join Us](#)

Follow us:



NATAL - Israel Trauma and Resiliency Center  
[Unsubscribe](#) | [Report Spam](#)

נשלה במצעות תוכנת ActiveTrail

